



通用阀门目录



General Service Valves

北泽阀门有限公司
KITZ CORPORATION

KITZ—高质量名牌阀厂产品的象征

北泽阀门有限公司—闻名世界的综合阀门生产企业

The World's Leading Valve Manufacturer

KITZ
The Brand of Reliability

北泽阀门有限公司, 创业于1951年, 至今, 已成为世界屈指可数的综合阀门厂家之一。北泽阀门有限公司不仅生产一般设备用阀门以及各种工业成套设备用阀门, 还生产各种自动操作、测试设备用阀门。

北泽阀门有限公司拥有十家生产工厂。在这些工厂里, 从铸造、锻造加工到组装, 都是在本公司严格的质量管理下进行系列化生产。另外, 北泽阀门有限公司的产品在出厂时, 均根据本公司制定的“质量保证条例”进行严格检查, 因此得到了世界各地用户的好评, 被誉为“高质量的阀门”。

本产品目录中介绍的各种阀门, 均为本公司直属工厂所生产, 都是从“建筑设备管道配线”用阀门中精选出的产品。除此之外, 还备有许多适用于其它领域的各种阀门, 请直接向本公司或代理店咨询。

KITZ Corporation, a leader in the flow control industry, produces an extensive range of valves and auxiliary equipment. Since its foundation in 1951, KITZ has dedicated all its resources to providing top quality products for public and private utility services, heavy duty industrial applications and sophisticated instrumentation systems.

KITZ Corporation currently operates four domestic and four overseas valve plants. All KITZ plants incorporate KITZ' unique integrated production system. With the KITZ system, constantly updated facilities for material casting and forging, component machining, and product



总公司所在地

assembly are situated under one roof. The system's stress on plant self-sufficiency minimizes dependence on outside suppliers. The KITZ Quality Assurance Manual sees to it that the entire system is implemented with uncompromising quality management. The result; KITZ' worldwide reputation for unsurpassed quality of its products.

This catalog introduces those KITZ valves that are used principally for building utilities service. Your inquiries on any of the full KITZ range of products not listed here will receive immediate attention from the staff at the KITZ World Headquarters in Chiba, Japan.

系列化高质量产品生产体制

The Integrated Production System For the Supply of High Quality Products

开发、设计工序

利用电脑进行信息储存、处理。设计时根据多方面的需求, 考虑其安全性、耐久性、通用性及永久性的特点, 设计具有适应市场需求的多功能产品。

Product Development and Design

Electronic data processing is applied to supply analog and digital data for the research, development and design of all new products. Advanced systems applications help satisfy complex evaluation criteria for such varied factors as marketability, functional advantages, safety, Durability, product performance, component interchangeability and maintenance ease.



利用电脑辅助设计阀门

铸造、锻造工程

阀体的铸造、锻造技术是决定阀门质量的关键。因此，本公司在进行严格的选材后，利用引进的自动高压造型机、自动铸造生产线以及高压冲床机，应用长年积累的精湛技术，生产出值得高度信赖的铸造、铸造素材。

Casting and Forging

Sophisticated casting and forging techniques learned over the years are responsible for the high quality of all shell materials of KITZ valves, the pressure containing devices. Stringently selected raw materials are cast or forged into valve shells of high reliability. State-of-the-art mass-production is carried out by automated high-pressure molding machines, computer controlled pouring lines, and gigantic press forging machines.

加工、装配工程

引进了全自动加工机器人和自动装配生产线，建立了快捷、保质、保量的生产体制。

Machining and Assembly

Highly automated machining and assembly shops systematically produce KITZ valves of constant quality in a steady supply for on-time delivery.

试验、检查工程

北泽阀门有限公司对品质检查方面要求十分严格，采用多种不同方法包括：化学成份分析、非破坏性检查、机械强度测试及流量特性试验等。在最后品质检定过程中，北泽阀门有限公司会抽取多个样本，安装在要求极高及极度恶劣的工作环境下使用，例如超高温的工作环境或是使用超低温的液体等。保证阀门的高品质是北泽阀门有限公司向客户的承诺。

Testing and Inspection

KITZ Quality Control is supported by an elaborate network of test and inspection facilities that include automated chemical analyzers, mechanical property testers, a wide variety of non-destructive examination apparatus, and elaborate hydrodynamic testing system. Final performance evaluations are carried out at prototype test benches for hazardous applications such as cryogenic fluid service.

在日本率先获得 ISO9000 证书

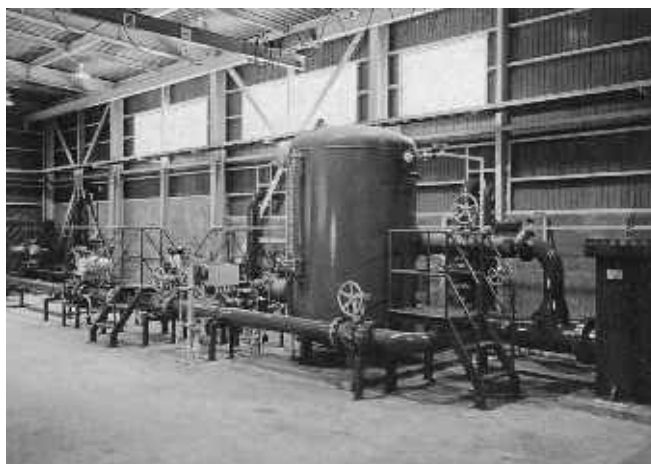
已得到广泛公认的ISO9000系列，是保证质量的国际规格系列标准。北泽阀门有限公司走在日本企业的最前端，早在1989年11月就首次在日本取得了ISO9000的认证。从一般设备用阀门到测试设备用阀门，均符合该规格的标准。因此，本着保证质量这一宗旨，在严格遵守ISO9000的前提下，北泽阀门有限公司的阀门产品得到了广大用户的高度评价和信赖。



铸钢制造生产线



自动传输加工系统



流量特性试验装置

ISO9000证书



ISO 9001 Certification, The First in Japan

In November, 1989, KITZ Corporation became the first Japanese manufacturer to be awarded ISO 9001 certification for full conformity to ISO quality management standard.